

**PAX8 Antibody (Center)**  
**Affinity Purified Rabbit Polyclonal Antibody (Pab)**  
**Catalog # AP6874C**

**Specification**

---

**PAX8 Antibody (Center) - Product Information**

Application	FC, IHC-P, WB,E
Primary Accession	<a href="#">Q06710</a>
Other Accession	<a href="#">Q00288</a>
Reactivity	Human
Predicted	Mouse
Host	Rabbit
Clonality	Polyclonal
Isotype	Rabbit IgG
Antigen Region	285-313

**PAX8 Antibody (Center) - Additional Information**

**Gene ID** 7849

**Other Names**

Paired box protein Pax-8, PAX8

**Target/Specificity**

This PAX8 antibody is generated from rabbits immunized with a KLH conjugated synthetic peptide between 285-313 amino acids from the Central region of human PAX8.

**Dilution**

FC~~1:10~50

IHC-P~~1:10~50

WB~~1:1000

E~~Use at an assay dependent concentration.

**Format**

Purified polyclonal antibody supplied in PBS with 0.09% (W/V) sodium azide. This antibody is purified through a protein A column, followed by peptide affinity purification.

**Storage**

Maintain refrigerated at 2-8°C for up to 2 weeks. For long term storage store at -20°C in small aliquots to prevent freeze-thaw cycles.

**Precautions**

PAX8 Antibody (Center) is for research use only and not for use in diagnostic or therapeutic procedures.

**PAX8 Antibody (Center) - Protein Information**

**Name** PAX8

**Function** Transcription factor for the thyroid-specific expression of the genes exclusively expressed in the thyroid cell type, maintaining the functional differentiation of such cells.

**Cellular Location**

Nucleus.

**Tissue Location**

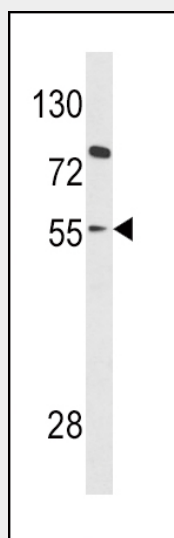
Expressed in the excretory system, thyroid gland and Wilms tumors

**PAX8 Antibody (Center) - Protocols**

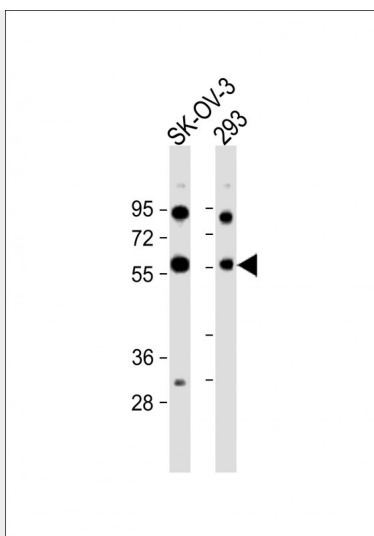
Provided below are standard protocols that you may find useful for product applications.

- [Western Blot](#)
- [Blocking Peptides](#)
- [Dot Blot](#)
- [Immunohistochemistry](#)
- [Immunofluorescence](#)
- [Immunoprecipitation](#)
- [Flow Cytometry](#)
- [Cell Culture](#)

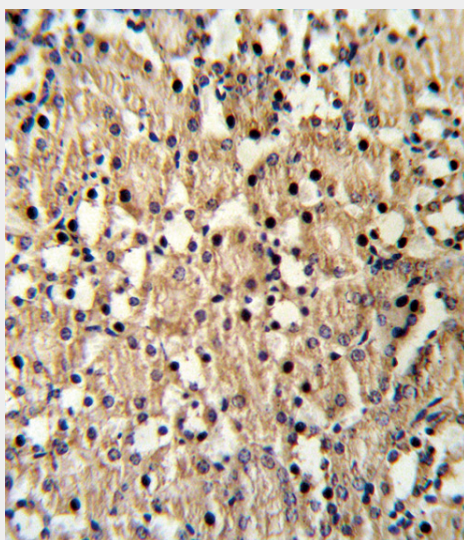
**PAX8 Antibody (Center) - Images**



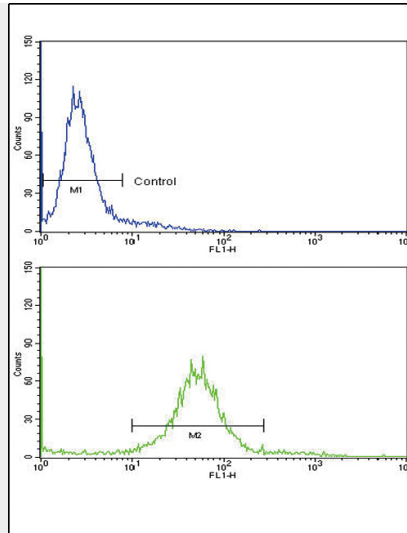
Western blot analysis of PAX8 Antibody (Center) (Cat. #AP6874c) in HL-60 cell line lysates (35ug/lane). PAX8 (arrow) was detected using the purified Pab.



All lanes : Anti-PAX8 Antibody (Center) at 1:1000 dilution Lane 1: SK-OV-3 whole cell lysate Lane 2: 293 whole cell lysate Lysates/proteins at 20 µg per lane. Secondary Goat Anti-Rabbit IgG, (H+L), Peroxidase conjugated at 1/10000 dilution. Predicted band size : 48 kDa Blocking/Dilution buffer: 5% NFDM/TBST.



Formalin-fixed and paraffin-embedded mouse kidney reacted with PAX8 Antibody (Center), which was peroxidase-conjugated to the secondary antibody, followed by DAB staining. This data demonstrates the use of this antibody for immunohistochemistry; clinical relevance has not been evaluated.



Flow cytometric analysis of 293 cells using PAX8 Antibody (Center)(bottom histogram) compared to a negative control cell (top histogram). FITC-conjugated goat-anti-rabbit secondary antibodies were used for the analysis.

#### **PAX8 Antibody (Center) - Background**

PAX8 is a member of the paired box (PAX) family of transcription factors. Members of this family contain a paired box domain, an octapeptide, and a paired-type homeodomain. This nuclear protein is involved in thyroid follicular cell development and expression of thyroid-specific genes.

#### **PAX8 Antibody (Center) - References**

Ramos,H.E., et.al., Thyroid 19 (1), 61-68 (2009)